

With Colored Wings I glide,
bold and beautiful, a butterfly.
To remind you that even though
we are apart,
my spirit is always with you,
forever in your heart.



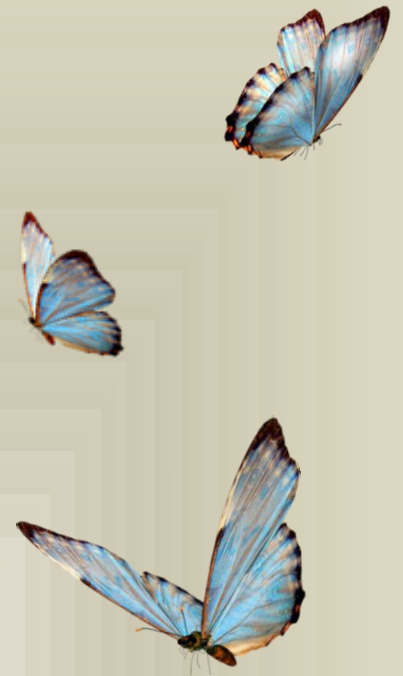
Golden Links Lodge

2280 St. Mary's Road
Phone: (204)257-9947
Fax: (204)257-2405



What to do next.

What to do after a loved one passes away.



Take Care of yourself.

Greif

It is a very emotional experience when a loved one passes away, and can be overwhelming. Allow yourself the time to grieve, and reminisce over fond memories of your loved one.

Self-care

Give yourself time and permission to heal, listen to your body and reach out to others for help. Continue to do things that you enjoy, allow yourself to laugh and remember you are not alone.

Bereavement groups

Age and Opportunity
Phone: (204) 956-6440
info@ageopportunity.mb.ca
www.ageopportunity.mb.ca

Palliative Manitoba
Phone: (204) 889-8525 Fax: (204) 888-8874
www.palliativemanitoba.ca
info@palliativemanitoba.ca

Good Neighbors Active Living Centre
Phone: (204) 669-1710 Fax: (204) 661-0750
http://www.gnalc.ca

Belongings

We encourage that families pack and remove their loved ones belongings from their room within 24 hours. If you require assistance or need to store items a nominal fee may be charged to the residents trust account.

Donations

Golden Links does not accept donated clothing, furniture or equipment. Under special circumstances some items may be donated. If you wish to inquire about this please speak to the Social Worker or Manager of Clinical Services.

Finances

The Business Office will assist you in closing out accounts, and settling any outstanding fees or charges. A check will be made out to the estate of the resident within 60 days of their passing.

Our Condolences.

We would like to extend our deepest sympathies to you and your family during your time of loss. We express our gratitude for giving us the opportunity to share in chapter of your loved ones life. Our thoughts are with you during this difficult time.



End of Life Survey

Golden Links is participating in a WRHA led survey in regards to satisfaction with End of Life in Personal Care Homes.

Approximately one month after residents passing the WRHA will mail a survey to their family, in regards to their experience with the end of life care provided by the facility.

We respectfully requests that families complete and send these surveys back the WRHA as we will use the information in them to improve our services.

